



INFINITE FORWARD PLEASURE

AUFINE GROUP CO., LIMITED

Tel: +86-0532-88960296,88962816

Email: info@aufine.com www.aufine.com

AUFINE Truck Tyres

2018 V2



About Us »

Aufine Group Co., Limited is located in the most beautiful coastal city Qingdao, China, with the vision of supplying the world best tyre, best service and brand for all men happy to drive on.

To provide riders all over the world with the most superior quality tyres, Aufine carries on total quality management in design, raw material, production, quality control, testing and check, logistics, after-sales services, etc.; Nowadays, Aufine tyre is contributing to bringing safety, comfort and pleasure to every driver in the world.

Aufine is continually developing new innovations in truck, bus and passenger car tyre technology. With a full line-up of tyres tailored to nearly every commercial-use application, Aufine truck and bus tyres provide the highest possible level of safety, dependability and cost-effectiveness for different road conditions in the world.

For transportation purpose trucks, there are 4 production lines. Aufine tyres off road line for long distance travel which is adapted to continued high speed driving and economic fuel consumption. For buses, Aufine designed express way tyres to superior high safety and lower fuel consumption and high mileage. For engineering purpose trucks, there are all weather regional renovatable high way tyre for travel medium and long-distance. Non-Highway tyres with long service life and great elasticity and tyres are for varied road services. For light commercial vehicles, Aufine light truck tyres get the increased mileage and high durability you need.

Not only relying on advanced technology, world class production and testing equipment, but also the spirits to put the best possible tyres on the road and the desire to highly satisfy the driver's expectation. Aufine tyres win high reputation from customers and different international organizations. Nowadays, Aufine tyres have got the most certifications in the tyre industry including DOT, ECE, REACH, LABELLING, S-MARK, CCC, ISO9001, TS16949, GCC, INMETRO, BIS, SMARTWAY, SASO, SONCAP, LATU, NOM, etc.

The Aufine tyre distribution network is keeping on expanding now and we are operating on more than 120 countries and regions in Asia, Africa, Europe, North America, South America and Oceania. Continued development of Aufine tyre, also bring the chance for us to provide superior service to the drivers in different regions.

Aufine pays much attention to brand culture and communication and takes personal training, serving and cooperating culture as the core stone of company cohesion and development. Aufine not only works for the development of superior quality tyres, but also promotes social activities and charity events to help and support the society development.

The sole contact between the vehicle and the road is a patch of rubber. Drivers can only trust their trucks, buses or cars to turn, stop, and go if they trust their tyres. Aufine's passionate commitment to safety and performance inspires us to supply the best tires for our customers. Where there are vehicles, there are drivers! Where there are drivers, there will be AUFINE!

Infinite forward pleasure, Aufine tyre!

General content »

Company introduction	1
Technology guide	3
Tyre application chart	7
Long haul	9
Regional	16
Mix	25
Off road	37
Size availability	41
Size line-up	46
AUFINE radial truck tyres	49
European Tyre Labelling	50

















Cost Performance



Satisfaction

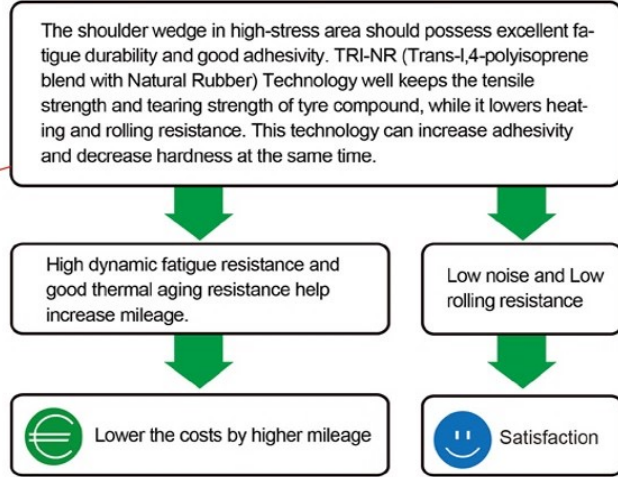


Reliability

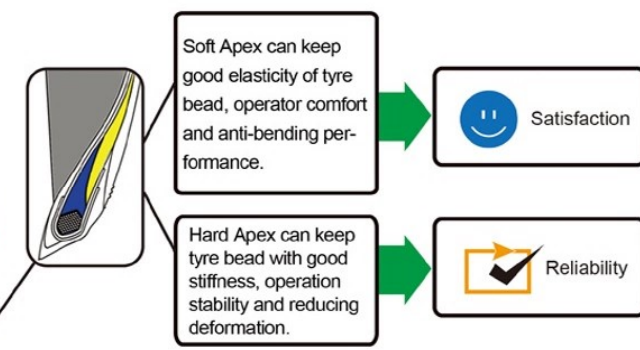
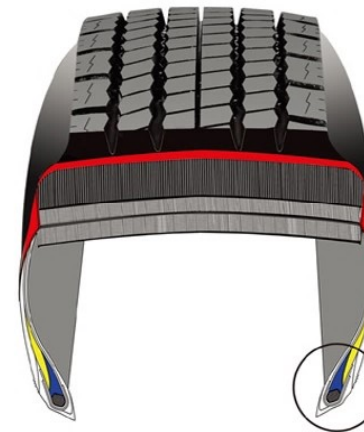
FEATURES	€	😊	✓	Application
 <p>TPI-NR Technology can maintain and improve the original features of rubber especially the dynamic features such as rolling resistance, low heating, anti-fatigue and anti-abrasion.</p>	*	*	*	
 <p>Dual Apex (combination of hard and soft apex) retains the rigidity and stability of bead and improves fuel efficient and comfort.</p>	*	*	*	
 <p>SWP (Sidewall Protection) protects sidewall and tyre body from crash and impact.</p>	*		*	
 <p>Low Heating Technology with improving formula of tread rubber helps on fuel-saving and green performance.</p>	*		*	
 <p>Self-Cleaning Design efficiently helps less stone retention, avoiding damages to the groove bottom.</p>	*	*	*	
 <p>Ex-Width Solid Shoulder enhances grip on road surface, comfortable handling performance and safety. Progressive, variable-width grooves reduce noise. The closed shoulder design improves anti-wear ability of tread and restrains eccentric wear of shoulder.</p>	*	*		
 <p>Ex-Width Open Shoulder enhances grip on road surface, comfortable handling performance and safety. Progressive and variable-width grooves reduce noise. The open shoulder design improves strong traction and braking ability.</p>	*	*		



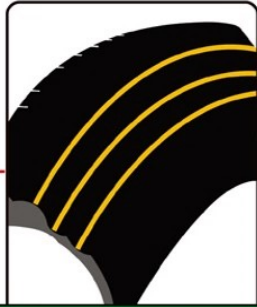
TPI-NR Technology



Dual Apex The combination of two different bead fillers: Hard Apex and Soft Apex



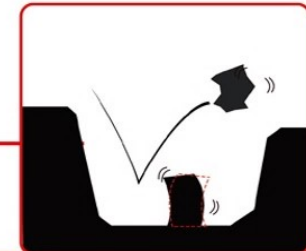
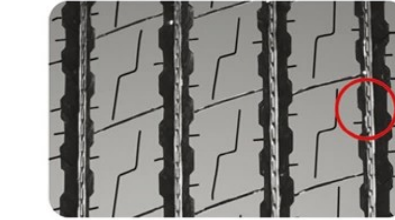
SWP Sidewall Protection



Unique sidewall design protects sidewall and tyre body from crash and impact. It also ensures stability of tyre construction and increases lifespan.

Lower the costs by higher mileage

Self Cleaning Design

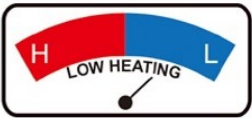


Protective ridges in the base of the tread grooves improve self cleaning properties and protect grooves from puncturing and cutting, which ensures long lifespan and higher mileage.



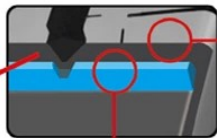
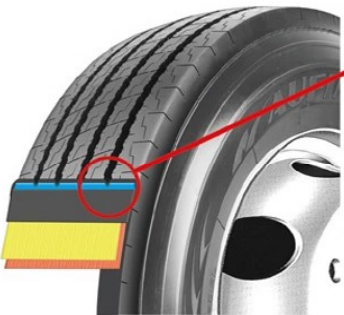
Belt ply

- Lower the costs by higher mileage
- Reliability
- Satisfaction



Low Heating Technology

The top layer provides wear resistant quality and the base rubber between the topsheet and the cord fabric includes a special component that lowers down the tyre temperature.



Crown compound is with high elasticity, good anti-wear performance, low heating and high anti-tear performance.

The base rubber on the crown offers low-heating and good anti-chip performance.

The tread rubber is the key factor of the tyre service life. High Anti-wear and low heating performance helps to improve longer mileage.

Lower the costs by higher mileage

Reliability

EX-WIDTH SOLID SHOULDER

The widened contact area provides stronger traction and ensures much safer and more comfortable handling. The closed shoulder design improves anti-wear ability of tread and restrains eccentric wear of shoulder. And it helps steady handling, lower noise, lower heating, which provides much more comfort during driving.

Satisfaction

EX-WIDTH OPEN SHOULDER

The widened contact area provides stronger traction and ensures the driving safer and more comfortable. The open shoulder with transverse block pattern design provides excellent traction and braking ability.

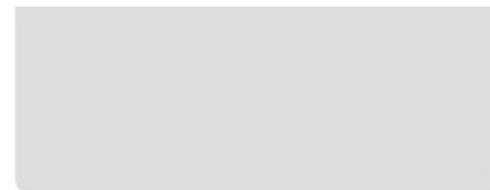
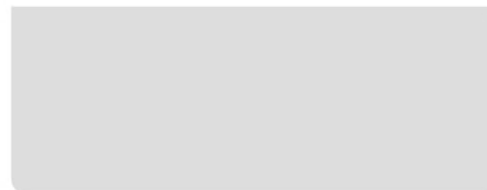
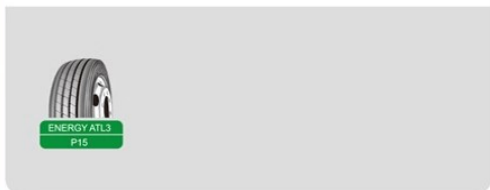
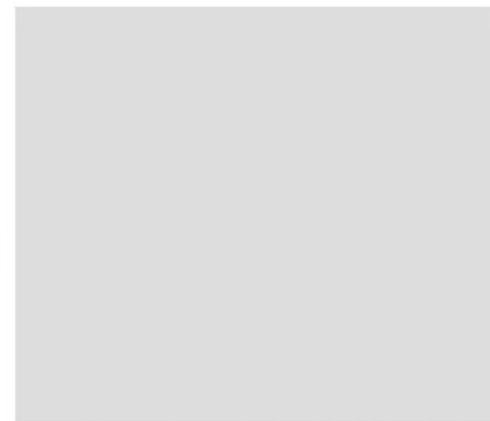
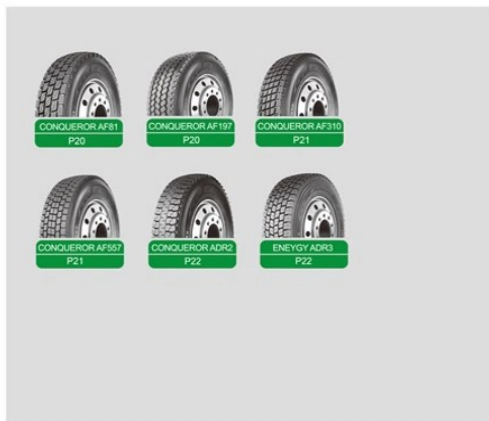
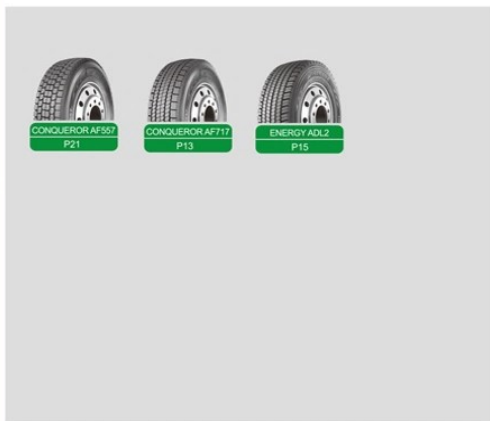
Satisfaction



All Position / Steer

Drive

Trailer





TRUCK&BUS RADIAL TYRE

LONG HAUL

Road character
Mainly used on highway

Application
Long distance / High speed



GALAXY AF177

ALL POSITION / STEER



- Recommend to use
- Permitted
- Not recommended to use

In principle circumferential and continual pattern design provides lower running resistance and noise.

Special tread design provides extra ordinary anti-side-skid and anti-wet property.

Size	P.R	Load Range	Style	Load Index	Tread Depth		Max Speed mph	Speed Rating	Overall Diameter		Overall Width		Standard Rim	Max. Tire Load Single				Max. Tire Load Dual			
					32nds	mm			in.	mm.	in.	mm.		lbs.	psi	kg.	kpa	lbs.	psi	kg.	kpa
8R22.5	14	G	TL	130/128	17.0	13.5	80	M	36.8	935	8.0	203	6.00	4190	120	1900	830	3970	120	1800	830
9R22.5	16	H	TL	139/137	18.3	14.5	80	M	38.3	974	9.0	229	6.75	5360	135	2430	930	5070	135	2300	930
10R22.5	16	H	TL	144/142	18.9	15.5	80	M	40.1	1018	10.0	254	7.50	6175	130	2800	900	5840	130	2650	900
11R22.5	16	H	TL	146/143	20.8	16.5	80	M	41.5	1054	11.0	279	8.25	6610	120	3000	830	6005	120	2725	830
11R24.5	16	H	TL	149/146	20.8	16.5	75	L	43.4	1103	11.0	279	8.25	7160	120	3250	830	6620	120	3000	830
12R22.5	18	J	TL	152/149	20.8	16.5	80	M	42.7	1084	11.8	300	9.00	7830	135	3550	930	7160	135	3250	930
13R22.5	18	J	TL	154/151	20.8	16.5	75	L	44.3	1124	12.6	320	9.75	8270	120	3750	830	7610	120	3450	830
205/75R17.5	14	G	TL	124/122	16.4	13.0	80	M	29.5	749	6.3	160	6.00	3530	110	1600	760	3310	110	1500	760
215/75R17.5	14	G	TL	126/124	16.4	13.0	80	M	30.0	761	6.8	172	6.00	3750	102	1700	700	3530	102	1600	700
215/75R17.5	16	H	TL	135/133	16.4	13.0	62	J	30.0	761	6.8	172	6.00	4805	125	2180	860	4540	125	2060	860
225/75R17.5	16	H	TL	129/127	16.4	13.0	80	M	30.6	776	7.1	180	6.75	4080	120	1850	830	3860	120	1750	830
235/75R17.5	16	H	TL	132/130	17.0	13.5	80	M	31.2	792	7.4	189	6.75	4410	112	2000	775	4190	112	1900	775
235/75R17.5	18	J	TL	143/141	17.0	13.5	62	J	31.2	792	7.4	189	6.75	6005	127	2725	875	5675	127	2575	875
245/70R17.5	16	H	TL	136/134	16.4	13.0	80	M	30.7	781	7.6	192	7.50	4940	130	2240	850	4675	130	2120	850
245/70R17.5	18	J	TL	143/141	16.4	13.0	62	J	30.7	781	7.6	192	7.50	6005	130	2725	900	5675	130	2575	900
225/70R19.5	14	G	TL	128/126	17.0	13.5	80	M	31.7	804	6.9	176	6.75	3970	110	1800	760	3750	110	1700	760
245/70R19.5	16	H	TL	136/134	17.0	13.5	80	M	32.8	832	7.6	192	7.50	4940	120	2240	830	4675	120	2120	830
245/70R19.5	18	J	TL	143/141	17.0	13.5	62	J	32.8	832	7.6	192	7.50	6005	127	2725	875	5675	127	2575	875
255/70R22.5	16	H	TL	140/137	16.4	13.0	80	M	36.6	930	10.0	255	7.50	5510	120	2500	830	5070	120	2300	830
265/70R19.5	16	H	TL	140/138	18.3	14.5	80	M	34.1	866	7.9	200	7.50	5510	120	2500	830	5205	120	2360	830
265/70R19.5	18	J	TL	143/141	18.3	14.5	62	J	34.1	866	7.9	200	7.50	6005	123	2725	850	5675	123	2575	850
285/70R19.5	16	H	TL	146/144	18.3	14.5	80	M	35.0	888	8.5	216	8.25	6610	130	3000	900	6175	130	2800	900
285/70R19.5	18	J	TL	150/148	18.3	14.5	62	J	35.0	888	8.5	216	8.25	7385	130	3350	900	6945	130	3150	900
275/80R22.5	18	H	TL	148/145	21.0	16.5	80	M	40.0	958	11.0	276	8.25	6940	130	3150	900	6395	130	2900	900
275/80R22.5	16	H	TL	149/146	20.8	16.5	80	M	39.8	1012	10.9	276	8.25	7165	123	3250	850	6620	123	3000	850
295/80R22.5	18	J	TL	154/151	20.8	16.5	80	M	41.1	1044	11.7	298	9.00	8270	130	3750	900	7610	130	3450	900
315/70R22.5	18	J	TL	156/150	19.5	15.5	80	L	42.3	1075	12.4	314	9.00	8820	130	4000	900	7385	130	3350	900
315/80R22.5	20	L	TL	157/154	20.8	16.5	80	M	42.3	1075	12.4	314	9.00	9090	130	4125	900	8270	130	3750	900



GALAXY AF156

ALL POSITION / STEER



- Recommend to use
- Permitted
- Not recommended to use

Buttressed shoulder helps resist wear in high scrub applications.
Full-depth sipes offer exceptional traction throughout the usable life of the tyre.

Size	P.R.	Load Range	Style	Load Index	Tread Depth		Max Speed mph	Speed Rating	Overall Diameter		Overall Width		Standard Rim	Max. Tire Load Single				Max. Tire Load Dual			
					32nds	mm			in.	mm.	in.	mm.		lbs.	psi	kg.	kpa	lbs.	psi	kg.	kpa
11.00R20	18	J	TT	152/149	18.6	14.8	68	K	42.8	1087	11.3	287	8.00	7830	135	3550	930	7170	135	3250	930



GALAXY AF558

ALL POSITION / STEER



- Recommend to use
- Permitted
- Not recommended to use

Special tread pattern design provides long mileage, low noise and excellent performance of avoiding anomalous abrasion.

Circumferential pattern design helps low rolling resistance and high speed performance.

Size	P.R.	Load Range	Style	Load Index	Tread Depth		Max Speed mph	Speed Rating	Overall Diameter		Overall Width		Standard Rim	Max. Tire Load Single				Max. Tire Load Dual			
					32nds	mm			in.	mm.	in.	mm.		lbs.	psi	kg.	kpa	lbs.	psi	kg.	kpa
11R22.5	16	H	TL	146/143	18.9	15.0	80	M	41.5	1054	11.0	279	8.25	6610	120	3000	830	6005	120	2725	830
11R24.5	16	H	TL	149/146	18.9	15.0	75	L	43.4	1103	11.0	279	8.25	7160	120	3250	830	6610	120	3000	830
285/75R24.5	16	H	TL	147/144	18.9	15.0	75	L	41.3	1050	11.1	283	8.25	6780	120	3075	830	6175	120	2800	830
295/75R22.5	16	H	TL	146/143	18.9	15.0	75	L	39.8	1010	11.7	298	9.00	6610	120	3000	830	6005	120	2725	830



GALAXY AF327

ALL POSITION / STEER



- Recommend to use
- Permitted
- Not recommended to use

Dual compound tread rubber helps ensure cool operating temperatures and helps keep tyre wear rate low.

Deep, wide channels help provide excellent water evacuation throughout the life of the tyre.

Lateral siping enhance traction and braking.

Size	P.R.	Load Range	Style	Load Index	Tread Depth		Max Speed mph	Speed Rating	Overall Diameter		Overall Width		Standard Rim	Max. Tire Load Single				Max. Tire Load Dual			
					32nds	mm			in.	mm.	in.	mm.		lbs.	psi	kg.	kpa	lbs.	psi	kg.	kpa
385/65R22.5	20	L	TL	160	20.8	16.5	68	K	42.2	1072	15.3	389	11.75	9920	130	4500	900	-	-	-	-
385/65R22.5	22	M	TL		20.8	16.5	68	K/L	42.2	1072	15.3	389	11.75	10500	140	4750	950	-	-	-	-

162/160



GALAXY AF667

ALL POSITION / STEER



- Recommend to use
- Permitted
- Not recommended to use

Improved mileage and turning stability with solid shoulder and center design.

Good sideslip and mud slip resistance.

Even wear tread pattern design.

Size	P.R.	Load Range	Style	Load Index	Tread Depth		Max Speed mph	Speed Rating	Overall Diameter		Overall Width		Standard Rim	Max. Tire Load Single				Max. Tire Load Dual			
					32nds	mm			in.	mm.	in.	mm.		lbs.	psi	kg.	kpa	lbs.	psi	kg.	kpa
11.00R22	18	J	TT	154/151	18.9	15.0	75	L	44.7	1135	11.5	293	8.00	8270	135	3750	930	7610	135	3450	930
12R22.5	18	J	TL	152/149	18.9	15.0	80	M	42.7	1084	11.8	300	9.00	7830	135	3550	930	7160	135	3250	930
275/80R22.5	16	H	TL	149/146	18.9	15.0	80	M	39.8	1012	10.9	276	8.25	7160	123	3250	850	6620	123	3000	850
295/60R22.5	16	H	TL	150/147	17.0	13.5	75	L	36.5	926	11.5	292	9.00	7385	130	3350	900	6780	130	3075	900
295/80R22.5	18	J	TL	154/151	18.9	15.0	80	M	41.1	1044	11.7	298	9.00	8270	130	3750	900	7610	130	3450	900
305/70R22.5	16	H	TL	152/148	18.9	15.0	80	M	39.4	1000	12.0	305	9.00	7830	130	3550	900	6945	130	3150	900
305/75R24.5	16	H	TL	154/149	18.9	15.0	75	L	42.5	1080	12.0	305	9.00	8270	123	3750	850	7160	123	3250	850
315/60R22.5	16	H	TL	152/148	17.0	13.5	80	M	37.4	949	12.4	316	9.75	7830	130	3550	900	6945	130	3150	900
315/80R22.5	18	J	TL	154/151	18.9	15.0	80	M	42.3	1075	12.4	314	9.00	8270	120	3750	830	7610	120	3450	830
315/80R22.5	20	L	TL	157/154	18.9	15.0	80	M	42.3	1075	12.4	314	9.00	9090	130	4125	900	8270	130	3750	900



CONQUEROR AF717

DRIVE



- Recommend to use
- Permitted
- Not recommended to use

Fuel efficient drive tyre.

No compromise on durability, irregular wear resistance and wet performance.

Excellent traction and wet weather handling.

Size	P.R.	Load Range	Style	Load Index	Tread Depth		Max Speed mph	Speed Rating	Overall Diameter		Overall Width		Standard Rim	Max. Tire Load Single				Max. Tire Load Dual			
					32nds	mm			in.	mm.	in.	mm.		lbs.	psi	kg.	kpa	lbs.	psi	kg.	kpa
11.00R22	18	J	TT	154/151	27.7	22.0	75	L	44.7	1135	11.5	293	8.00	8270	135	3750	930	7610	135	3450	930
11R22.5	16	H	TL	146/143	22.7	18.0	80	M	41.5	1054	11.0	279	8.25	6610	120	3000	830	6005	120	2725	830
12R22.5	18	J	TL	152/149	22.7	18.0	80	M	42.7	1084	11.8	300	9.00	7830	135	3550	930	7160	135	3250	930
13R22.5	18	J	TL	154/151	22.7	18.0	75	L	44.3	1124	12.6	320	9.75	8270	120	3750	830	7610	120	3450	830
205/75R17.5	14	G	TL	124/122	18.9	15.0	80	M	29.6	753	6.3	160	6.00	3530	110	1600	760	3310	110	1500	760
215/75R17.5	14	G	TL	126/124	18.9	15.0	80	M	30.1	765	6.8	172	6.00	3750	102	1700	700	3530	102	1600	700
225/75R17.5	16	H	TL	129/127	20.1	16.0	80	M	30.8	782	7.1	180	6.75	4080	120	1850	830	3860	120	1750	830
235/75R17.5	16	H	TL	132/130	20.1	16.0	80	M	31.4	797	7.4	189	6.75	4410	112	2000	775	4190	112	1900	775
245/70R17.5	16	H	TL	136/134	20.1	16.0	80	M	31.0	787	7.6	192	7.50	4940	123	2240	850	4675	123	2120	850
225/70R19.5	14	G	TL	128/126	19.6	15.5	80	M	31.8	807	6.9	176	6.75	3970	110	1800	760	3750	110	1700	760
245/70R19.5	16	H	TL	136/134	18.4	14.5	80	M	33.0	838	7.6	192	7.50	4940	120	2240	830	4675	120	2120	830
265/70R19.5	16	H	TL	140/138	19.6	15.5	80	M	34.2	869	7.9	200	7.50	5510	120	2500	830	5205	120	2360	830
285/70R19.5	16	H	TL	146/144	20.8	16.5	80	M	35.2	893	8.5	216	8.25	6610	130	3000	900	6175	130	2800	900
275/70R22.5	18	H	TL	148/145	23.5	18.5	80	M	40.0	958	11.0	276	8.25	6940	130	3150	900	6395	130	2900	900
275/80R22.5	16	H	TL	149/146	22.7	18.0	80	M	39.8	1012	10.9	276	8.25	7165	123	3250	850	6620	123	3000	850
295/80R22.5	18	J	TL	154/151	22.7	18.0	80	M	41.1	1044	11.7	298	9.00	8270	130	3750	900	7610	130	3450	900
315/70R22.5	18	J	TL	156/150	22.7	18.0	80	L	42.3	1075	12.4	314	9.00	8820	130	4000	900	7385	130	3350	900
315/80R22.5	18	J	TL	154/151	22.7	18.0	80	M	42.3	1075	12.4	314	9.00	8270	120	3750	830	7610	120	3450	830
315/80R22.5	20	L	TL	157/154	22.7	18.0	80	M	42.3	1075	12.4	314	9.00	9090	130	4125	900	8270	130	3750	900



GALAXY AF867

ALL POSITION / STEER



- Recommend to use
- Permitted
- Not recommended to use

Wider and circumferential grooves design with extra sideslip resistance.

Low running noise and running resistance.

Size	P.R.	Load Range	Style	Load Index	Tread Depth		Max Speed mph	Speed Rating	Overall Diameter		Overall Width		Standard Rim	Max. Tire Load Single				Max. Tire Load Dual			
					32nds	mm			in.	mm.	in.	mm.		lbs.	psi	kg.	kpa	lbs.	psi	kg.	kpa
11.00R22	18	J	TT	154/151	18.9	15.0	75	L	44.7	1135	11.5	293	8.00	8265	135	3750	930	7605	135	3450	930
11R22.5	16	H	TL	146/143	18.9	15.0	80	M	41.5	1054	11.0	279	8.25	6610	120	3000	830	6005	120	2725	830
12R22.5	18	J	TL	152/149	18.9	15.0	80	M	42.7	1084	11.8	300	9.00	7830	135	3550	930	7160	135	3250	930
13R22.5	18	J	TL	154/151	18.9	15.0	75	L	44.3	1124	12.6	320	9.75	8270	120	3750	830	7610	120	3450	830
295/80R22.5	18	J	TL	154/151	18.9	15.0	80	M	41.1	1044	11.7	298	9.00	8270	130	3750	900	7610	130	3450	900
315/80R22.5	18	J	TL	154/151	18.9	15.0	80	M	42.3	1075	12.4	314	9.00	8270	120	3750	830	7610	120	3450	830
315/80R22.5	20	L	TL	157/154	19.8	15.0	80	M	42.3	1075	12.4	314	9.00	9090	130	4125	900	8270	130	3750	900



ENERGY AEL2

ALL POSITION / STEER



- Recommend to use
- Permitted
- Not recommended to use

Excellent mileage combined with low rolling resistance and optimum wet braking characteristics.

Improved wet braking and mileage performances and excellent wet grip.

Robust, damage resistant carcass construction for enhanced durability.

Size	P.R.	Load Range	Style	Load Index	Tread Depth		Max Speed mph	Speed Rating	Overall Diameter		Overall Width		Standard Rim	Max. Tire Load Single				Max. Tire Load Dual			
					32nds	mm			in.	mm.	in.	mm.		lbs.	psi	kg.	kpa	lbs.	psi	kg.	kpa
295/80R22.5	18	J	TL	154/151	20.8	16.5	75	L	41.1	1044	11.7	298	9.00	8270	130	3750	900	7610	130	3450	900
				152/148																	
315/70R22.5	18	J	TL	156/150	18.9	15	75	L	40.0	1017	12.2	310	9.00	8820	130	4000	900	7390	130	3350	900
				154/150																	
315/80R22.5	20	L	TL	156/150	20.8	16.5	75	L	42.8	1087	12.4	314	9.00	8820	123	4000	850	7390	123	3350	850
				154/150																	
385/65R22.5	20	L	TL	160	20.8	16.5	68	K	42.0	1067	15.2	385	11.75	9920	125	4500	860	7390	125	3350	860
				158																	



ENERGY ADL2
DRIVE



- Recommend to use
- Permitted
- Not recommended to use

Specific design of shoulder area for high resistance against kerbing and lateral scrubbing. Directional pattern that brings high traction performance while offering good regular wear.

Full depth inclined sipes on central grooves along with full depth sipes and grooves on shoulder for enhanced transversal and longitudinal grip and traction throughout entire tyre life.

Size	P.R.	Load Range	Style	Load Index	Tread Depth		Max Speed mph	Speed Rating	Overall Diameter		Overall Width		Standard Rim	Max. Tire Load Single				Max. Tire Load Dual			
					32nds	mm			in.	mm.	in.	mm.		lbs.	psi	kg.	kpa	lbs.	psi	kg.	kpa
315/70R22.5	18	J	TL	154/150	23.3	18.5	75	L	40.0	1017	12.2	310	9.00	8270	130	3750	900	7390	130	3350	900
				152/148																	
315/80R22.5	20	L	TL	156/150	26.5	21.0	75	L	42.8	1087	12.4	314	9.00	8820	123	4000	850	7390	123	3350	850
				154/150																	



ENERGY ATL3
TRAILER



- Recommend to use
- Permitted
- Not recommended to use

Low rolling resistance, high fuel efficiency. Inner liner with good balance after inflation, can greatly improve the durability of belt.

Compound of Low heat releasing and high wear resistance of the tread rubber helps reach longer mileage.

Bigger contact area with the road surface provides strength evenly distributed to prevent the irregular wear.

Size	P.R.	Load Range	Style	Load Index	Tread Depth		Max Speed mph	Speed Rating	Overall Diameter		Overall Width		Standard Rim	Max. Tire Load Single				Max. Tire Load Dual			
					32nds	mm			in.	mm.	in.	mm.		lbs.	psi	kg.	kpa	lbs.	psi	kg.	kpa
11R22.5	16	H	TL	146/143	12.3	9.8	75	M	41.5	1054	11.0	279	8.25	6610	120	3000	830	6005	120	2725	830
11R24.5	16	H	TL	149/146	12.3	9.8	75	L	43.4	1103	11.0	279	8.25	7160	120	3250	830	6610	120	3000	830
285/75R24.5	16	H	TL	147/144	12.3	9.8	75	L	41.3	1050	11.1	283	8.25	6780	120	3075	830	6175	120	2800	830
295/75R22.5	16	H	TL	146/143	12.3	9.8	75	L	39.8	1010	11.7	298	9.00	6610	120	3000	830	6005	120	2725	830



TRUCK&BUS RADIAL TYRE
REGIONAL PICK UP&DELIVERY



Road character
Mainly used on regional pick up & delivery

Application
Medium distance and speed
Relatively more start and brake



GALAXY AF11

ALL POSITION / STEER



- Recommend to use
- Permitted
- Not recommended to use

Solid shoulder to help withstand scrub and abrasion.
 Big tread block in middle to aid in cut resistance.
 Excellent stability.

Size	P.R.	Load Range	Style	Load Index	Tread Depth		Max Speed mph	Speed Rating	Overall Diameter		Overall Width		Standard Rim	Max. Tire Load Single				Max. Tire Load Dual			
					32nds	mm			in.	mm.	in.	mm.		lbs.	psi	kg.	kpa	lbs.	psi	kg.	kpa
12.00R24	20	L	TT	160/157	18.3	14.5	68	K	48.3	1226	12.3	313	8.50	9920	130	4500	900	9090	130	4125	900



GALAXY AF17

ALL POSITION / STEER



- Recommend to use
- Permitted
- Not recommended to use

Offset block shoulder design promotes soft soil mobility.
 Discontinuous block design grooves offer excellent brake and traction ability.
 Deep tread spicing designed for easy heat release, good traction performance and low noise level.

Size	P.R.	Load Range	Style	Load Index	Tread Depth		Max Speed mph	Speed Rating	Overall Diameter		Overall Width		Standard Rim	Max. Tire Load Single				Max. Tire Load Dual			
					32nds	mm			in.	mm.	in.	mm.		lbs.	psi	kg.	kpa	lbs.	psi	kg.	kpa
11.00R20	18	J	TT	152/149	18.3	14.5	75	L	42.8	1087	11.3	287	8.00	7830	135	3550	930	7170	135	3250	930



GALAXY AF16

ALL POSITION / STEER



- Recommend to use
- Permitted
- Not recommended to use

Excellent high speed, durability performances and lower rolling resistance by solid shoulder and solid central pattern design.
 Discontinuous small block design and transverse groove offer excellent brake and traction ability.
 Designed for long mileage.

Size	P.R.	Load Range	Style	Load Index	Tread Depth		Max Speed mph	Speed Rating	Overall Diameter		Overall Width		Standard Rim	Max. Tire Load Single				Max. Tire Load Dual			
					32nds	mm			in.	mm.	in.	mm.		lbs.	psi	kg.	kpa	lbs.	psi	kg.	kpa
7.50R20	14	G	TT	130/126	15.7	12.5	75	L	36.8	935	8.5	215	6.00	4160	110	1885	770	3750	110	1700	770
9.00R20	16	H	TT	144/142	18.3	14.5	75	L	40.2	1022	10.2	258	7.00	6180	130	2800	900	5850	130	2650	900
10.00R20	18	J	TT	149/146	18.9	15.0	75	L	41.5	1053	10.7	273	7.50	7160	135	3250	930	6610	135	3000	930
11.00R20	18	J	TT	152/149	19.5	15.5	75	L	42.8	1087	11.3	287	8.00	7830	135	3550	930	7160	135	3250	930
12.00R20	18	J	TT	154/151	19.5	15.5	75	L	44.2	1122	12.2	310	8.50	8274	120	3750	830	7610	120	3450	830
12.00R20	20	L	TT	156/153	19.5	15.5	75	L	44.2	1122	12.2	310	8.50	8820	130	4000	900	8050	130	3650	900
11R22.5	16	H	TL	146/143	18.9	15.0	80	M	41.3	1050	11.0	279	8.25	6620	120	3000	830	6005	120	2725	830
315/80R22.5	20	L	TL	157/154	18.9	15.0	80	M	42.3	1075	12.4	314	9.00	9090	130	4125	900	8270	130	3750	900



GALAXY AF33

ALL POSITION / STEER



- Recommend to use
- Permitted
- Not recommended to use

Excellent high speed, durability performances and lower rolling resistance by solid shoulder and solid central pattern design.
 Discontinuous small block design and transverse groove offer excellent brake and traction ability.
 Designed for long mileage.

Size	P.R.	Load Range	Style	Load Index	Tread Depth		Max Speed mph	Speed Rating	Overall Diameter		Overall Width		Standard Rim	Max. Tire Load Single				Max. Tire Load Dual			
					32nds	mm			in.	mm.	in.	mm.		lbs.	psi	kg.	kpa	lbs.	psi	kg.	kpa
385/65R22.5	20	L	TL	160	20.8	16.5	68	K	42.2	1072	15.3	389	11.75	9920	130	4500	900	-	-	-	-
425/65R22.5	18	J	TL	162	20.8	16.5	62	J	44.3	1124	16.9	430	13.00	10475	110	4750	760	-	-	-	-
425/65R22.5	20	L	TL	165	20.8	16.5	68	K	44.3	1124	16.9	430	13.00	11350	120	5150	830	-	-	-	-



ENERGY AER2

ALL POSITION / STEER



- Recommend to use
- Permitted
- Not recommended to use

Newly designed tread pattern and tread compound provide an outstanding first life tyre mileage.

Unique groove rib and shoulder stone ejector prevents stone trapping and stone drilling.

Size	P.R.	Load Range	Style	Load Index	Tread Depth		Max Speed mph	Speed Rating	Overall Diameter		Overall Width		Standard Rim	Max. Tire Load Single				Max. Tire Load Dual			
					32nds	mm			in.	mm.	in.	mm.		lbs.	psi	kg.	kpa	lbs.	psi	kg.	kpa
11R22.5	16	H	TL	146/143	20.8	16.5	80	M	41.5	1054	11.0	279	8.25	6610	120	3000	830	6005	120	2725	830

CONQUEROR AF81

DRIVE



- Recommend to use
- Permitted
- Not recommended to use

Tread block design featuring four longitudinal sipes for optimized grip and traction.

New damage resistant rubber compound for improved removal mileage.

Tread designed to minimize irregular wear.

Directional tread pattern to minimize stone retention.

Size	P.R.	Load Range	Style	Load Index	Tread Depth		Max Speed mph	Speed Rating	Overall Diameter		Overall Width		Standard Rim	Max. Tire Load Single				Max. Tire Load Dual			
					32nds	mm			in.	mm.	in.	mm.		lbs.	psi	kg.	kpa	lbs.	psi	kg.	kpa
10.00R20	18	J	TT	149/146	22.7	18.0	68	K	41.5	1053	10.7	273	7.50	7160	135	3250	930	6610	135	3000	930

ENERGY AER3

ALL POSITION / STEER



- Recommend to use
- Permitted
- Not recommended to use

Wider tread design promotes high mileage, good handling and even wear

Stone ejector design avoids stones from penetrating to the belts.

Sipes on pattern helps to reduce heating and enhance anti-wet ability.

Size	P.R.	Load Range	Style	Load Index	Tread Depth		Max Speed mph	Speed Rating	Overall Diameter		Overall Width		Standard Rim	Max. Tire Load Single				Max. Tire Load Dual			
					32nds	mm			in.	mm.	in.	mm.		lbs.	psi	kg.	kpa	lbs.	psi	kg.	kpa
315/70R22.5	18	J	TL	156/150	18.9	15	75	L	40.0	1017	12.2	310	9.00	8820	130	4000	900	7390	130	3350	900
				154/150																	
315/80R22.5	20	L	TL	156/150	20.8	16.5	75	L	42.8	1087	12.4	314	9.00	8820	123	4000	850	7390	123	3350	850
				154/150																	

CONQUEROR AF197

DRIVE



- Recommend to use
- Permitted
- Not recommended to use

All tread blocks get full contact with the ground, avoiding irregular wear and providing longer mileage.

Suitable for driving position, with high loading capability and good braking and ground grasping capability.

Size	P.R.	Load Range	Style	Load Index	Tread Depth		Max Speed mph	Speed Rating	Overall Diameter		Overall Width		Standard Rim	Max. Tire Load Single				Max. Tire Load Dual			
					32nds	mm			in.	mm.	in.	mm.		lbs.	psi	kg.	kpa	lbs.	psi	kg.	kpa
385/65R22.5	20	L	TL	160	20.8	16.5	68	K	42.2	1072	15.3	389	11.75	9920	130	4500	900	-	-	-	-



CONQUEROR AF310

DRIVE



- Recommend to use
- Permitted
- Not recommended to use

Intended for mounting on all-position.
 Advanced tread pattern with high load capacity.
 Rubber compound is specially developed for all-weather tyre use.
 Long mileage and increased resistance to uneven tread wear.

Size	P.R.	Load Range	Style	Load Index	Tread Depth		Max Speed mph	Speed Rating	Overall Diameter		Overall Width		Standard Rim	Max. Tire Load Single				Max. Tire Load Dual			
					32nds	mm			in.	mm.	in.	mm.		lbs.	psi	kg.	kpa	lbs.	psi	kg.	kpa
10.00R20	18	J	TT	149/146	19.5	15.5	75	L	41.2	1047	10.9	278	7.50	7160	135	3250	930	6610	135	3000	930



CONQUEROR ADR2

DRIVE



- Recommend to use
- Permitted
- Not recommended to use

Special bead structure design improves durability of the tyre.
 Tread rubber with high anti-wear ability and deeper tread provide longer mileage.
 Special tread pattern design effectively improves self-clean performance.
 Strong pattern provides excellent traction ability.

Size	P.R.	Load Range	Style	Load Index	Tread Depth		Max Speed mph	Speed Rating	Overall Diameter		Overall Width		Standard Rim	Max. Tire Load Single				Max. Tire Load Dual			
					32nds	mm			in.	mm.	in.	mm.		lbs.	psi	kg.	kpa	lbs.	psi	kg.	kpa
10.00R20	18	J	TT	149/146	24.6	19.5	75	L	41.5	1055	10.9	278	7.50	7160	135	3250	930	6610	135	3000	930
11.00R20	18	J	TT	152/149	25.8	20.5	75	L	42.8	1087	11.3	287	8.00	7830	135	3550	930	7160	135	3250	930
12R22.5	18	J	TL	152/149	21.4	17.0	80	M	42.7	1084	11.8	300	9.00	7830	135	3550	930	7160	135	3250	930



CONQUEROR AF557

DRIVE



- Recommend to use
- Permitted
- Not recommended to use

Medium to long-range drive tyre for highway and regional use.
 Excellent wet and dry manoeuvrability.
 Sidewall protector for superior durability.

Size	P.R.	Load Range	Style	Load Index	Tread Depth		Max Speed mph	Speed Rating	Overall Diameter		Overall Width		Standard Rim	Max. Tire Load Single				Max. Tire Load Dual			
					32nds	mm			in.	mm.	in.	mm.		lbs.	psi	kg.	kpa	lbs.	psi	kg.	kpa
10.00R20	18	J	TT	149/146	27.0	21.5	75	L	41.5	1055	10.9	278	7.50	7160	135	3250	930	6610	135	3000	930
11.00R22	18	J	TT	154/151	27.7	22.0	75	L	44.7	1135	11.5	293	8.00	8270	135	3750	930	7610	135	3450	930
12R22.5	18	J	TL	152/149	25.2	20.0	80	M	42.7	1084	11.8	300	9.00	7830	135	3550	930	7160	135	3250	930
295/60R22.5	16	H	TL	150/147	23.3	18.5	75	L	36.5	926	11.5	292	9.00	7385	130	3350	900	6780	130	3075	900
295/80R22.5	18	J	TL	154/151	25.2	20.0	80	M	41.1	1044	11.7	298	9.00	8270	130	3750	900	7610	130	3450	900
305/70R22.5	16	H	TL	152/148	27.7	22.0	80	M	39.4	1000	12.0	305	9.00	7830	130	3550	900	6945	130	3150	900
305/75R24.5	16	H	TL	154/149	27.7	22.0	75	L	42.5	1080	12.0	305	9.00	8270	123	3750	850	7160	123	3250	850
315/60R22.5	16	H	TL	152/148	23.3	18.5	80	M	37.4	949	12.4	316	9.75	7830	130	3550	900	6945	130	3150	900
315/80R22.5	18	J	TL	154/151	25.2	20.0	80	M	42.3	1075	12.4	314	9.00	8270	120	3750	830	7610	120	3450	830
315/80R22.5	20	L	TL	157/154	25.2	20.0	80	M	42.3	1075	12.4	314	9.00	9090	130	4125	900	8270	130	3750	900



ENERGY ADR3

DRIVE



- Recommend to use
- Permitted
- Not recommended to use

Versatile multipurpose drive tyre for usage in a broad range of conditions.
 Excellent mileage performance.
 Superb traction level and high resistance against irregular wear.
 Excellent durability and retreadability.

Size	P.R.	Load Range	Style	Load Index	Tread Depth		Max Speed mph	Speed Rating	Overall Diameter		Overall Width		Standard Rim	Max. Tire Load Single				Max. Tire Load Dual			
					32nds	mm			in.	mm.	in.	mm.		lbs.	psi	kg.	kpa	lbs.	psi	kg.	kpa
295/80R22.5	18	J	TL	154/151 152/148	26.5	21.0	75	L	41.1	1044	11.7	298	9.00	8270	130	3750	900	7610	130	3450	900
315/70R22.5	18	J	TL	154/150 152/148	25.2	20.0	75	L	40.0	1017	12.2	310	9.00	8270	130	3750	900	7390	130	3350	900
315/80R22.5	20	L	TL	156/150 154/150	26.5	21.0	75	L	42.8	1087	12.4	314	9.00	8820	123	4000	850	7390	123	3350	850



ENERGY ATR2

TRAILER



- Recommend to use
- Permitted
- Not recommended to use

Tread pattern designed to provide effective water drainage and uniform wear.
 Outstanding longitudinal and lateral grip on dry and wet surfaces.
 Wider shoulders giving an improved resistance to scrubbing.

Size	P.R.	Load Range	Style	Load Index	Tread Depth		Max Speed mph	Speed Rating	Overall Diameter		Overall Width		Standard Rim	Max. Tire Load Single				Max. Tire Load Dual			
					32nds	mm			in.	mm.	in.	mm.		lbs.	psi	kg.	kpa	lbs.	psi	kg.	kpa
385/65R22.5	20	L	TL	160	20.8	16.5	68	K	42.0	1067	15.2	385	11.75	9920	130	4500	900	-	-	-	-
				158																	
385/55R22.5	20	L	TL	160	19.5	15.5	62	J	39.2	996	15.2	386	12.25	9920	130	4500	900	-	-	-	-



ENERGY ATR5

TRAILER



- Recommend to use
- Permitted
- Not recommended to use

Featuring 4 longitudinal, zig-zag grooves to provide excellent transverse grip and excellent braking performance, even on wet surfaces.

Robust zig-zag grooves ensure excellent roadholding even on wet surfaces.

Grooves geometry designed to prevent stone trapping.

Size	P.R.	Load Range	Style	Load Index	Tread Depth		Max Speed mph	Speed Rating	Overall Diameter		Overall Width		Standard Rim	Max. Tire Load Single				Max. Tire Load Dual			
					32nds	mm			in.	mm.	in.	mm.		lbs.	psi	kg.	kpa	lbs.	psi	kg.	kpa
385/55R19.5	18	J	TL	156	19.5	15.5	62	J	36.2	919	15.6	396	12.25	8820	130	4000	900	-	-	-	-
385/55R22.5	20	L	TL	160	19.5	15.5	62	J	39.2	996	15.2	386	12.25	9920	130	4500	900	-	-	-	-



ENERGY ATR3

TRAILER



- Recommend to use
- Permitted
- Not recommended to use

Rubber compound improves resistance to accidental damage.
 Widened tread gives better ground-contact and loading capacity.
 Ribbed sidewall protection and robust shoulder design improve resistance to lateral scrubbing.

Size	P.R.	Load Range	Style	Load Index	Tread Depth		Max Speed mph	Speed Rating	Overall Diameter		Overall Width		Standard Rim	Max. Tire Load Single				Max. Tire Load Dual			
					32nds	mm			in.	mm.	in.	mm.		lbs.	psi	kg.	kpa	lbs.	psi	kg.	kpa
385/65R22.5	20	L	TL	160	20.8	16.5	68	K	42.0	1067	15.2	385	11.75	9920	130	4500	900	-	-	-	-
				158																	



ENERGY ATR6

TRAILER



- Recommend to use
- Permitted
- Not recommended to use

Rib-type pattern helps deliver a smoother ride, while the wide base design allows you to haul more.

Special tread compounds provide resistance to irregular wear, leading to long life and cutting your cost per mile.

Sidewall protector Ribs protect the casing by fighting damage from curbing, cuts and abrasions.

Size	P.R.	Load Range	Style	Load Index	Tread Depth		Max Speed mph	Speed Rating	Overall Diameter		Overall Width		Standard Rim	Max. Tire Load Single				Max. Tire Load Dual			
					32nds	mm			in.	mm.	in.	mm.		lbs.	psi	kg.	kpa	lbs.	psi	kg.	kpa
425/65R22.5	20	L	TL	165	20.8	16.5	68	K	44.3	1124	16.6	422	12.25	11350	120	5150	830	-	-	-	-



TRUCK&BUS RADIAL TYRE



Road character

Alternate on road and off road

Application

Shorter distance, highly carrying capacity, harsh using conditions

Relatively more vehicles start and brake.



GALAXY AF18

ALL POSITION / STEER



- Recommend to use
- Permitted
- Not recommended to use

Offset block shoulder design promotes soft soil mobility.

Application specific compound to help resist aggression from chipping and cutting.

Zig-zag groove angles help resist stone retention and drilling.

Size	P.R	Load Range	Style	Load Index	Tread Depth		Max Speed mph	Speed Rating	Overall Diameter		Overall Width		Standard Rim	Max. Tire Load Single				Max. Tire Load Dual			
					32nds	mm			in.	mm.	in.	mm.		lbs.	psi	kg.	kpa	lbs.	psi	kg.	kpa
6.50R16LT	12	F	TT	110/105	12.6	10.0	80	M	29.5	750	7.3	185	5.50F	2340	95	1060	670	2040	95	925	670
7.00R16LT	14	G	TT	118/114	16.4	13.0	75	L	30.6	776	7.9	200	5.50F	2910	110	1320	770	2600	110	1180	770
7.50R16LT	16	H	TT	124/120	15.7	12.5	75	L	31.7	805	8.5	215	6.00G	3525	125	1600	870	3085	125	1400	870
7.50R20	14	G	TT	130/126	15.7	12.5	75	L	36.8	935	8.5	215	6.00	4160	110	1885	770	3750	110	1700	770
8.25R16LT	16	H	TT	128/124	15.7	12.5	80	M	33.7	856	9.3	235	6.50H	3970	110	1800	770	3525	110	1600	770
8.25R20	16	H	TT	139/137	18.3	14.5	75	L	38.2	971	9.1	232	6.50	5360	135	2430	930	5070	135	2300	930
9.00R20	16	H	TT	144/142	19.5	15.5	75	L	40.2	1022	10.2	258	7.00	6175	130	2800	900	5850	130	2650	900
10.00R20	18	J	TT	149/146	20.8	16.5	75	L	41.5	1053	10.7	273	7.50	7160	135	3250	930	6610	135	3000	930
11.00R20	18	J	TT	152/149	21.4	17.0	75	L	42.8	1087	11.3	287	8.00	7830	135	3550	930	7160	135	3250	930
12.00R20	18	J	TT	154/151	22.0	17.5	75	L	44.2	1122	12.2	310	8.50	8270	120	3750	830	7610	120	3450	830
12.00R20	20	L	TT	156/153	22.0	17.5	75	L	44.2	1122	12.2	310	8.50	8820	130	4000	900	8050	130	3650	900
12.00R24	20	L	TT	160/157	18.3	14.5	68	K	48.3	1226	12.3	313	8.50	9920	130	4500	900	9090	130	4125	900
11R22.5	16	H	TL	146/143	20.8	16.5	80	M	41.5	1054	11.0	279	8.25	6610	120	3000	830	6005	120	2725	830
12R22.5	18	J	TL	152/149	21.4	17.0	80	M	42.7	1084	11.8	300	9.00	7830	135	3550	930	7160	135	3250	930
13R22.5	18	J	TL	154/151	22.0	17.5	75	L	44.3	1124	12.6	320	9.75	8270	120	3750	830	7610	120	3450	830
315/80R22.5	20	L	TL	157/154	21.4	17.0	80	M	42.3	1075	12.4	314	9.00	9090	130	4125	900	8270	130	3750	900



CONQUEROR AF91

ALL POSITION / STEER



- Recommend to use
- Permitted
- Not recommended to use

Deep grooves and solid central pattern design, furthest improve tyre life.
 Special tread rubber compound helps resist chipping, chunking and tearing.
 The drive axle radial designed for mixed road service of gravel-pit, earth and short distance on bitumen road.

Size	P.R.	Load Range	Style	Load Index	Tread Depth		Max Speed mph	Speed Rating	Overall Diameter		Overall Width		Standard Rim	Max. Tire Load Single				Max. Tire Load Dual			
					32nds	mm			in.	mm.	in.	mm.		lbs.	psi	kg.	kpa	lbs.	psi	kg.	kpa
8.25R16LT	16	H	TT	128/124	16.4	13.0	80	M	33.7	856	9.3	235	6.50H	3970	112	1800	770	3530	112	1600	770
10.00R20	18	J	TT	149/146	22.0	17.5	75	L	41.5	1053	10.7	273	7.50	7160	135	3250	930	6610	135	3000	930
11.00R20	18	J	TT	152/149	22.7	18.0	75	L	42.8	1087	11.3	287	8.00	7830	135	3550	930	7170	135	3250	930
12.00R20	18	J	TT	154/151	23.3	18.5	75	L	44.2	1122	12.2	310	8.50	8270	120	3750	830	7610	120	3450	830
12.00R20	20	L	TT	156/153	23.3	18.5	75	L	44.2	1122	12.2	310	8.50	8820	130	4000	900	8050	130	3650	900



CONQUEROR AF559

ALL POSITION / STEER



- Recommend to use
- Permitted
- Not recommended to use

Alternating groove and tread block design can smoothly run over with less noise and running resistance.
 Cut and chip resistant compound.
 Reinforced belt package for added retreadability.

Size	P.R.	Load Range	Style	Load Index	Tread Depth		Max Speed mph	Speed Rating	Overall Diameter		Overall Width		Standard Rim	Max. Tire Load Single				Max. Tire Load Dual			
					32nds	mm			in.	mm.	in.	mm.		lbs.	psi	kg.	kpa	lbs.	psi	kg.	kpa
11R22.5	16	H	TL	146/143	28.3	22.5	80	M	41.5	1054	11.0	279	8.25	6610	120	3000	830	6005	120	2725	830
11R24.5	16	H	TL	149/146	28.3	22.5	75	L	43.4	1103	11.0	279	8.25	7160	120	3250	830	6610	120	3000	830
285/75R24.5	16	H	TL	147/144	28.3	22.5	75	L	41.3	1050	11.1	283	8.25	6780	120	3075	830	6175	120	2800	830
295/75R22.5	16	H	TL	146/143	28.3	22.5	75	L	39.8	1010	11.7	298	9.00	6610	120	3000	830	6005	120	2725	830



ENERGY AEM

ALL POSITION / STEER



- Recommend to use
- Permitted
- Not recommended to use

Wider tread pattern design promotes high mileage, good handling and even wear
 Special shoulder design with groove can effectively help heat dissipation and avoid irregular wear
 Sipes on the pattern provide better ground grasping and anti-slipping performance
 Protective ridges in the base of the grooves improves self-cleaning properties

Size	P.R.	Load Range	Style	Load Index	Tread Depth		Max Speed mph	Speed Rating	Overall Diameter		Overall Width		Standard Rim	Max. Tire Load Single				Max. Tire Load Dual			
					32nds	mm			in.	mm.	in.	mm.		lbs.	psi	kg.	kpa	lbs.	psi	kg.	kpa
385/65R22.5	20	L	TL	160 158	20.8	16.5	68	K L	42.0	1067	15.2	385	11.75	9920	130	4500	900	—	—	—	—



ENERGY AEM2

ALL POSITION / STEER



- Recommend to use
- Permitted
- Not recommended to use

Compact central tread blocks to improve resistance to tread tearing
 Protective ridges in the base of the grooves improve self-cleaning properties
 Wider tread grooves for improved grip on wet road surfaces
 Reinforced shoulder area improves resistance to lateral impact damage

Size	P.R.	Load Range	Style	Load Index	Tread Depth		Max Speed mph	Speed Rating	Overall Diameter		Overall Width		Standard Rim	Max. Tire Load Single				Max. Tire Load Dual			
					32nds	mm			in.	mm.	in.	mm.		lbs.	psi	kg.	kpa	lbs.	psi	kg.	kpa
315/80R22.5	20	L	TL	157/154	20.8	16.5	68	K	42.8	1087	12.4	314	9.00	9090	130	4125	900	8270	130	3750	900



ENERGY AEM3

ALL POSITION / STEER



- Recommend to use
- Permitted
- Not recommended to use

More efficient water and mud dispersion
 Protective ridges in the base of the grooves improve self-cleaning properties
 Sipes on pattern and special groove design helps to reduce heating and to longer mileage
 The closed tyre shoulder design provides better ground grasping and anti-slipping ability

Size	P.R.	Load Range	Style	Load Index	Tread Depth		Max Speed mph	Speed Rating	Overall Diameter		Overall Width		Standard Rim	Max. Tire Load Single				Max. Tire Load Dual			
					32nds	mm			in.	mm.	in.	mm.		lbs.	psi	kg.	kpa	lbs.	psi	kg.	kpa
13R22.5	18	J	TL	156/150	22	17.5	68	K	44.3	1124	12.6	320	9.75	8820	125	4000	860	7390	125	3350	860

CONQUEROR AF88

DRIVE



- Recommend to use
- Permitted
- Not recommended to use

Improved traction due to new directional tread design.
 Excellent protection from shocks, snags and impacts due to extra-thick sidewall.

Size	P.R.	Load Range	Style	Load Index	Tread Depth		Max Speed mph	Speed Rating	Overall Diameter		Overall Width		Standard Rim	Max. Tire Load Single				Max. Tire Load Dual			
					32nds	mm			in.	mm.	in.	mm.		lbs.	psi	kg.	kpa	lbs.	psi	kg.	kpa
12R22.5	18	J	TL	152/149	25.2	20.0	68	K	42.7	1084	11.8	300	9.00	7830	135	3550	930	7160	135	3250	930
13R22.5	18	J	TL	154/151	26.5	21.0	68	K	44.3	1124	12.6	320	9.75	8270	120	3750	830	7610	120	3450	830
295/80R22.5	18	J	TL	154/151	23.9	19.0	68	K	41.1	1044	11.7	298	9.00	8270	130	3750	900	7610	130	3450	900
315/80R22.5	20	L	TL	157/154	26.5	21.0	68	K	42.4	1078	12.4	314	9.00	9090	130	4125	900	8270	130	3750	900

CONQUEROR AF85

DRIVE



- Recommend to use
- Permitted
- Not recommended to use

Good driving capability on rough road conditions offered by ordinary block design.
 Suitable for rough road condition in a medium-short distance application.

Size	P.R.	Load Range	Style	Load Index	Tread Depth		Max Speed mph	Speed Rating	Overall Diameter		Overall Width		Standard Rim	Max. Tire Load Single				Max. Tire Load Dual			
					32nds	mm			in.	mm.	in.	mm.		lbs.	psi	kg.	kpa	lbs.	psi	kg.	kpa
10.00R20	18	J	TT	149/146	22.7	18.0	62	J	41.6	1056	10.7	273	7.50	7160	135	3250	930	6610	135	3000	930
11.00R20	18	J	TT	152/149	23.9	19.0	62	J	43.0	1091	11.3	287	8.00	7830	135	3550	930	7160	135	3250	930
12.00R20	18	J	TT	154/151	25.8	20.5	68	K	44.4	1128	12.2	310	8.50	8270	120	3750	830	7610	120	3450	830
12.00R20	20	L	TT	156/153	25.8	20.5	62	J	44.4	1128	12.2	310	8.50	8820	130	4000	900	8050	130	3650	900

CONQUEROR AF142

DRIVE



- Recommend to use
- Permitted
- Not recommended to use

One of the most popular tread patterns with all-steel casing.
 Low rolling resistance helps to reduce fuel consumption.
 Great traction characteristics on dry and wet roads.
 Rubber compound is specially developed for all-weather tyre use.
 High load capacity, high casing durability and resistance to damage.

Size	P.R.	Load Range	Style	Load Index	Tread Depth		Max Speed mph	Speed Rating	Overall Diameter		Overall Width		Standard Rim	Max. Tire Load Single				Max. Tire Load Dual			
					32nds	mm			in.	mm.	in.	mm.		lbs.	psi	kg.	kpa	lbs.	psi	kg.	kpa
9.00R20	16	H	TT	144/142	23.3	18.5	75	L	40.3	1024	10.2	260	7.00	6180	130	2800	900	5850	130	2650	900



CONQUEROR AF186

DRIVE



- Recommend to use
- Permitted
- Not recommended to use

Mixed block deeper patterns, widening road surface design to increase tyre grip.

Use of cut-resistant, anti-stab bar, wear of the tread formulation, an increase of tire wear resistance.

Applicable to various non-paved roads.

Size	P.R.	Load Range	Style	Load Index	Tread Depth		Max Speed mph	Speed Rating	Overall Diameter		Overall Width		Standard Rim	Max. Tire Load Single				Max. Tire Load Dual			
					32nds	mm			in.	mm.	lbs.	psi		kg.	kpa	lbs.	psi	kg.	kpa		
7.00R16LT	14	G	TT	118/114	18.9	15.0	68	K	30.7	781	7.9	200	5.50F	2910	110	1320	770	2600	110	1180	770
7.50R16LT	16	H	TT	124/120	18.9	15.0	68	K	31.9	810	8.5	215	6.00G	3525	125	1600	870	3085	125	1400	870
8.25R16LT	16	H	TT	128/124	19.5	15.5	68	K	33.9	862	9.3	235	6.50H	3970	112	1800	770	3530	112	1600	770
8.25R20	16	H	TT	139/137	20.8	16.5	68	K	38.4	975	9.1	232	6.50	5360	135	2430	930	5070	135	2300	930
9.00R20	16	H	TT	144/142	23.3	18.5	68	K	40.5	1028	10.2	258	7.00	6180	130	2800	900	5850	130	2650	900
10.00R20	18	J	TT	149/146	24.5	19.5	68	K	41.7	1059	10.7	273	7.50	7160	135	3250	930	6610	135	3000	930
11.00R20	18	J	TT	152/149	25.8	20.5	68	K	43.1	1094	11.3	287	8.00	7830	135	3550	930	7160	135	3250	930
12.00R20	18	J	TT	154/151	27.1	21.5	68	K	44.5	1130	12.2	310	8.50	8270	120	3750	830	7610	120	3450	830
12.00R20	20	L	TT	156/153	27.1	21.5	68	K	44.5	1130	12.2	310	8.50	8820	130	4000	900	8050	130	3650	900



CONQUEROR AF281

DRIVE



- Recommend to use
- Permitted
- Not recommended to use

All-season tube-type truck tyre with universal tread pattern on all-steel casing. Great traction characteristics on dry and wet roads.

Rubber compound is specially developed for all-weather tyre use.

High load capacity, high casing durability and resistance to damage.

Size	P.R.	Load Range	Style	Load Index	Tread Depth		Max Speed mph	Speed Rating	Overall Diameter		Overall Width		Standard Rim	Max. Tire Load Single				Max. Tire Load Dual			
					32nds	mm			in.	mm.	lbs.	psi		kg.	kpa	lbs.	psi	kg.	kpa		
10.00R20	18	J	TT	149/146	21.4	17.0	75	L	41.3	1050	10.9	278	7.50	7160	135	3250	930	6610	135	3000	930



CONQUEROR AF304

DRIVE



- Recommend to use
- Permitted
- Not recommended to use

Designed for exploitation in heavy duty conditions.

New tread wear resistant components of rubber compound for tread and sidewall, intended for protection from cuts, provide long mileage.

Rubber compound is specially developed for low temperature tyre use.

Size	P.R.	Load Range	Style	Load Index	Tread Depth		Max Speed mph	Speed Rating	Overall Diameter		Overall Width		Standard Rim	Max. Tire Load Single				Max. Tire Load Dual			
					32nds	mm			in.	mm.	lbs.	psi		kg.	kpa	lbs.	psi	kg.	kpa		
12.00R20	18	J	TT	154/151	23.9	19.0	75	L	44.2	1122	12.3	312	8.50	8270	123	3750	850	7610	123	3450	850

CONQUEROR AF701

DRIVE



- Recommend to use
- Permitted
- Not recommended to use

Suitable tyre for trucks and buses.

Unique pattern design offers superior resistance to irregular wearing.

High resistance to cuts and stone damage.

Suitable for drive wheels.

Size	P.R.	Load Range	Style	Load Index	Tread Depth		Max Speed mph	Speed Rating	Overall Diameter		Overall Width		Standard Rim	Max. Tire Load Single				Max. Tire Load Dual			
					32nds	mm			in.	mm.	lbs.	psi		kg.	kpa	lbs.	psi	kg.	kpa		
12R22.5	18	J	TL	152/149	25.8	20.5	80	M	42.5	1089	11.6	298	9.00	7828	135	3550	930	7166	135	3250	930



CONQUEROR AF702

DRIVE



- Recommend to use
- Permitted
- Not recommended to use

Resistance to irregular wear.
 High level of traction for on and off road.
 Wider and deeper tread using a special rubber compound designed to extend the life of the tyre.
 Suitable for drive and trailer wheels.

Size	P.R.	Load Range	Style	Load Index	Tread Depth		Max Speed mph	Speed Rating	Overall Diameter		Overall Width		Standard Rim	Max. Tire Load Single				Max. Tire Load Dual			
					32nds	mm			in.	mm.	in.	mm.		lbs.	psi	kg.	kpa	lbs.	psi	kg.	kpa
11.00R20	18	J	TT	152/149	23.3	18.5	62	K	42.5	1091	11.3	290	8.00	7828	135	3550	930	7166	135	3250	930
12.00R20	18	J	TT	154/151	25.2	20.0	68	K	44.0	1127	12.2	312	8.50	8269	120	3750	830	7607	120	3450	830



CONQUEROR AF706

DRIVE



- Recommend to use
- Permitted
- Not recommended to use

Resistance to irregular wear.
 High level of traction for on and off road.
 Wider and deeper tread using special rubber compound designed to extend the life of the tyre.
 Suitable for drive wheels.

Size	P.R.	Load Range	Style	Load Index	Tread Depth		Max Speed mph	Speed Rating	Overall Diameter		Overall Width		Standard Rim	Max. Tire Load Single				Max. Tire Load Dual			
					32nds	mm			in.	mm.	in.	mm.		lbs.	psi	kg.	kpa	lbs.	psi	kg.	kpa
12R22.5	18	J	TL	152/149	26.5	21.0	80	L	42.3	1085	11.9	305	9.00	7828	135	3550	930	7166	135	3250	930



CONQUEROR AF705

DRIVE



- Recommend to use
- Permitted
- Not recommended to use

Suitable for steer and drive wheel fitment.
 Suitable for both on and off road applications.
 Super level of traction.
 Resistant to cuts and stone retention.

Size	P.R.	Load Range	Style	Load Index	Tread Depth		Max Speed mph	Speed Rating	Overall Diameter		Overall Width		Standard Rim	Max. Tire Load Single				Max. Tire Load Dual			
					32nds	mm			in.	mm.	in.	mm.		lbs.	psi	kg.	kpa	lbs.	psi	kg.	kpa
11.00R20	18	J	TT	152/149	25.2	20.0	62	K	42.7	1094	11.3	290	8.00	7828	135	3550	930	7166	135	3250	930
12.00R20	18	J	TT	154/151	27.1	21.5	68	K	44.1	1130	12.2	312	8.50	8269	120	3750	830	7607	120	3450	830



CONQUEROR AF707

DRIVE



- Recommend to use
- Permitted
- Not recommended to use

Cut resistant with good self-cleaning properties.
 Resistance to irregular wear.
 Very popular fitment for drive wheel.
 Wider and deeper tread using a special rubber compound designed to extend the life of the tyre.

Size	P.R.	Load Range	Style	Load Index	Tread Depth		Max Speed mph	Speed Rating	Overall Diameter		Overall Width		Standard Rim	Max. Tire Load Single				Max. Tire Load Dual			
					32nds	mm			in.	mm.	in.	mm.		lbs.	psi	kg.	kpa	lbs.	psi	kg.	kpa
11R22.5	16	H	TL	146/143	24.6	19.5	80	L	41.2	1057	10.7	275	8.25	6615	120	3000	830	6009	120	2725	830
11R24.5	16	H	TL	149/146	24.6	19.5	75	L	43.3	1109	10.7	275	8.25	7166	120	3250	830	6615	120	3000	830



CONQUEROR AF708

DRIVE



- Recommend to use
- Permitted
- Not recommended to use

Wide deep tread pattern allows for a long wear life.
 Excellent performance for driving and braking.
 New tread design giving excellent traction and cut resistance.
 Very popular fitment for drive wheel.

Size	P.R.	Load Range	Style	Load Index	Tread Depth		Max Speed mph	Speed Rating	Overall Diameter		Overall Width		Standard Rim	Max. Tire Load Single				Max. Tire Load Dual			
					32nds	mm			in.	mm.	lbs.	psi		kg.	kpa	lbs.	psi	kg.	kpa		
11R22.5	16	H	TL	146/143	29.0	23.0	80	L	41.5	1064	10.7	275	8.25	6615	120	3000	830	6009	120	2725	830
11R24.5	16	H	TL	149/146	29.0	23.0	75	L	43.5	1116	10.7	275	8.25	7166	120	3250	830	6615	120	3000	830



ENERGY ADM3

DRIVE



- Recommend to use
- Permitted
- Not recommended to use

BIGFOOT decorative pattern design is especially for mixed road.
 M+S pattern design ensures powerful driving on icy and snowing roads.
 Special tread design effectively improves self-cleaning.
 High strength tyre crown and carcass improve the tyre blast resistance, ensure driving safety.
 Strong pattern provides powerful traction.

Size	P.R.	Load Range	Style	Load Index	Tread Depth		Max Speed mph	Speed Rating	Overall Diameter		Overall Width		Standard Rim	Max. Tire Load Single				Max. Tire Load Dual			
					32nds	mm			in.	mm.	lbs.	psi		kg.	kpa	lbs.	psi	kg.	kpa		
10.00R20	18	J	TT	149/146	25.2	20.0	68	K	41.5	1053	10.7	273	7.50	7160	135	3250	930	6610	135	3000	930



ENERGY ADM2

DRIVE



- Recommend to use
- Permitted
- Not recommended to use

Chamfered tread block design to reduce tread tearing
 Angled grooves reduce tread tearing when driving over obstacles
 Compact central tread blocks to improve resistance to tread tearing

Size	P.R.	Load Range	Style	Load Index	Tread Depth		Max Speed mph	Speed Rating	Overall Diameter		Overall Width		Standard Rim	Max. Tire Load Single				Max. Tire Load Dual			
					32nds	mm			in.	mm.	lbs.	psi		kg.	kpa	lbs.	psi	kg.	kpa		
315/80R22.5	20	L	TL	157/154	27.7	22	68	K	42.8	1087	12.4	314	9.00	9090	130	4125	900	8270	130	3750	900
13R22.5	18	J	TL	156/150	27.7	22	68	K	44.3	1124	12.6	320	9.75	8820	125	4000	860	7390	125	3350	860



ENERGY ADM5

DRIVE



- Recommend to use
- Permitted
- Not recommended to use

Robust, hardwearing, safe and reliable.
 Specially designed, particularly strong three-row block-type tread.
 Excellent traction on stony, sandy or muddy ground.
 Special tread design effectively improves self-cleaning.
 High resistance to punctures caused by nails and sharp stones.

Size	P.R.	Load Range	Style	Load Index	Tread Depth		Max Speed mph	Speed Rating	Overall Diameter		Overall Width		Standard Rim	Max. Tire Load Single				Max. Tire Load Dual			
					32nds	mm			in.	mm.	lbs.	psi		kg.	kpa	lbs.	psi	kg.	kpa		
10.00R20	18	J	TT	149/146	25.2	20.0	68	K	41.5	1053	10.7	273	7.50	7160	135	3250	930	6610	135	3000	930



TRUCK&BUS RADIAL TYRE TYRE FOR MINING OR OFF ROAD



Road character

Mainly used on mining area and relatively poor road surface

Application

Shorter distance, highly carrying capacity, extremely bad working conditions.

ENERGY AEH2

ALL POSITION / STEER



- Recommend to use
- Permitted
- Not recommended to use

New rubber compound offering improved resistance to accidental damage
Outstanding durability and performance, even in harsh, off-road conditions
Excellent resistance to chipping and cutting for long-lasting performance
Special pattern design provides high self-cleaning performance

Size	P.R.	Load Range	Style	Load Index	Tread Depth		Max Speed mph	Speed Rating	Overall Diameter		Overall Width		Standard Rim	Max. Tire Load Single				Max. Tire Load Dual			
					32nds	mm			in.	mm.	in.	mm.		lbs.	psi	kg.	kpa	lbs.	psi	kg.	kpa
13R22.5	18	J	TL	156/150	30.2	24	56	G	44.3	1124	12.6	320	9.75	8820	125	4000	860	7390	125	3350	860

CONQUEROR AF73

ALL POSITION / STEER



- Recommend to use
- Permitted
- Not recommended to use

Larger and stronger tread block design.
High traction and cut resistance.
Extra stronger carcass and bead design for extra heavy load.

Size	P.R.	Load Range	Style	Load Index	Tread Depth		Max Speed mph	Speed Rating	Overall Diameter		Overall Width		Standard Rim	Max. Tire Load Single				Max. Tire Load Dual			
					32nds	mm			in.	mm.	in.	mm.		lbs.	psi	kg.	kpa	lbs.	psi	kg.	kpa
10.00R20	18	J	TT	149/146	32.8	26.0	65	D	42.1	1070	10.7	273	7.50	7160	135	3250	930	6610	135	3000	930
11.00R20	18	J	TT	152/149	32.8	26.0	65	D	43.5	1104	11.3	287	8.00	7830	135	3550	930	7160	135	3250	930
12.00R20	18	J	TT	154/151	32.8	26.0	65	D	44.8	1139	12.2	310	8.50	8270	120	3750	830	7610	120	3450	830
12.00R20	20	L	TT	156/153	32.8	26.0	65	D	44.8	1139	12.2	310	8.50	8820	130	4000	900	8050	130	3650	900



CONQUEROR AF97

ALL POSITION / STEER



- Recommend to use
- Permitted
- Not recommended to use

Optimized combination of high speed and anti-cut ability provided by coherent big block pattern design.

Deep and wide tread pattern provide excellent traction in all-terrain road conditions.

Size	P.R.	Load Range	Style	Load Index	Tread Depth		Max Speed mph	Speed Rating	Overall Diameter		Overall Width		Standard Rim	Max. Tire Load Single				Max. Tire Load Dual			
					32nds	mm			in.	mm.	in.	mm.		lbs.	psi	kg.	kpa	lbs.	psi	kg.	kpa
9.00R20	16	H	TT	144/142	25.2	20.0	62	J	40.2	1022	10.2	258	7.00	6180	130	2800	900	5850	130	2650	900
10.00R20	18	J	TT	149/146	25.8	20.5	62	J	41.5	1053	10.7	273	7.50	7160	135	3250	930	6610	135	3000	930
11.00R20	18	J	TT	152/149	26.5	21.0	62	J	42.8	1087	11.3	287	8.00	7830	135	3550	930	7160	135	3250	930
12.00R20	18	J	TT	154/151	27.1	21.5	62	J	44.2	1122	12.2	310	8.50	8270	120	3750	830	7610	120	3450	830
12.00R20	20	L	TT	156/153	27.1	21.5	62	J	44.2	1122	12.2	310	8.50	8820	130	4000	900	8050	130	3650	900
12.00R24	20	L	TT	160/157	29.0	23.0	68	K	48.6	1234	12.3	313	8.50	9920	130	4500	900	9090	130	4125	900



CONQUEROR AF169

ALL POSITION / STEER



- Recommend to use
- Permitted
- Not recommended to use

Wide tread enables long wear life with stability and durability.

Deep tread for extra-long life and excellent traction.

Cut resistance with good self-cleaning properties in harsh conditions.

Suitable for all wheels position on mining vehicles.

Size	P.R.	Load Range	Style	Load Index	Tread Depth		Max Speed mph	Speed Rating	Overall Diameter		Overall Width		Standard Rim	Max. Tire Load Single				Max. Tire Load Dual			
					32nds	mm			in.	mm.	in.	mm.		lbs.	psi	kg.	kpa	lbs.	psi	kg.	kpa
8.25R16LT	16	H	TT	128/124	22.7	18.0	65	D	33.7	865	9.1	233	6.50H	3969	115	1800	770	3528	115	1600	770
8.25R20	16	H	TT	139/137	22.7	18.0	65	D	37.9	973	9.1	233	6.50	5358	135	2430	930	5072	135	2300	930
11.00R20	18	J	TT	152/149	29.0	23.0	65	D	42.9	1100	11.3	290	8.00	7828	135	3550	930	7166	135	3250	930
12.00R20	18	J	TT	154/151	30.2	24.0	65	D	44.3	1135	12.2	312	8.50	8269	120	3750	830	7607	120	3450	830



CONQUEROR AF189

ALL POSITION / STEER



- Recommend to use
- Permitted
- Not recommended to use

Wide and thick blocks, extra deep tread depth, offer excellent traction. Designed with strong structure, good load capacity.

Long service life, good anti-wear and anti-puncture attributes. Suitable to mine and mountain roads.

Size	P.R.	Load Range	Style	Load Index	Tread Depth		Max Speed mph	Speed Rating	Overall Diameter		Overall Width		Standard Rim	Max. Tire Load Single				Max. Tire Load Dual			
					32nds	mm			in.	mm.	in.	mm.		lbs.	psi	kg.	kpa	lbs.	psi	kg.	kpa
8.25R16LT	16	H	TT	128/124	22.7	18.0	65	D	34.1	865	9.2	235	6.50H	3970	112	1800	770	3530	112	1600	770
10.00R20	18	J	TT	149/146	27.7	22.0	65	D	42.1	1070	10.7	273	7.50	7160	135	3250	930	6610	135	3000	930
11.00R20	18	J	TT	152/149	29.0	23.0	65	D	43.5	1104	11.3	287	8.00	7830	135	3550	930	7160	135	3250	930
12.00R20	18	J	TT	154/151	30.2	24.0	65	D	44.8	1139	12.2	310	8.50	8270	120	3750	830	7610	120	3450	830



CONQUEROR AF737

ALL POSITION / STEER



- Recommend to use
- Permitted
- Not recommended to use




Wide lug pattern with open shoulder design provides strong traction.




Anti-skipping sidewall design provides strong anti-puncturing ability on bad road surface and improves durability of the tire body.




Big blocks design can shoulder ground pressure more efficiently and keep good performance even on mixed road condition.




Deeper tread pattern design ensure longer tyre lifetime.

Size	P.R.	Load Range	Style	Load Index	Tread Depth		Max Speed mph	Speed Rating	Overall Diameter		Overall Width		Standard Rim	Max. Tire Load Single				Max. Tire Load Dual			
					32nds	mm			in.	mm.	in.	mm.		lbs.	psi	kg.	kpa	lbs.	psi	kg.	kpa
14.00R20	★★	-	-	-	31.5	25.0	50	H	49.0	1245	14.8	375	10.00	11000	102	5000	700	-	-	-	-

PATTERN	SIZE	LOAD INDEX	SPEED RATING				
GALAXY AF11 _{IP17}	12.00R24	160/157	K				
	7.50R20	130/126	L				
	9.00R20	144/142	L				
	10.00R20	149/146	L				
	11.00R20	152/149	L				
GALAXY AF16 _{IP17}	12.00R20	154/151	L				
		156/153	L				
	11R22.5	146/143	M				
GALAXY AF17 _{IP18}	315/80R22.5	157/154	M				
	11.00R20	152/149	L				
GALAXY AF18 _{IP26}	6.50R16LT	110/105	M				
	7.00R16LT	118/114	L	D	C	71dB	
	7.50R16LT	124/120	L	D	C	71dB	
	7.50R20	130/126	L	D	C	71dB	
	8.25R16LT	128/124	M	D	C	71dB	
	8.25R20	139/137	L	D	C	71dB	
	9.00R20	144/142	L	D	C	71dB	
	10.00R20	149/146	L	D	C	71dB	
	11.00R20	152/149	L	D	C	71dB	
		154/151	L	D	C	71dB	
		156/153	L	D	C	71dB	
	12.00R24	160/157	K	D	C	71dB	
	11R22.5	146/143	M	D	C	71dB	
	12R22.5	152/149	M	D	C	71dB	
	13R22.5	154/151	L	D	C	71dB	
	315/80R22.5	157/154	M	D	C	71dB	
	GALAXY AF33 _{IP18}	385/65R22.5	160	K	C	C	76dB
		425/65R22.5	162	J	C	C	76dB
			165	K	C	C	76dB
	CONQUEROR AF73 _{IP38}	10.00R20	149/146	D			
11.00R20		152/149	D				
12.00R20		154/151	D				
CONQUEROR AF81 _{IP20}	156/153	D					
	9.00R20	144/142	K				
	10.00R20	149/146	K				
CONQUEROR AF85 _{IP29}	10.00R20	149/146	J				
	11.00R20	152/149	J				
	12.00R20	154/151	K				
CONQUEROR AF88 _{IP30}		156/153	J				
	12R22.5	152/149	K	B	C	73dB	
	13R22.5	154/151	K	B	D	73dB	
	295/80R22.5	154/151	K	B	C	73dB	
CONQUEROR AF91 _{IP27}	315/80R22.5	157/154	K	B	D	73dB	
	8.25R16LT	128/124	M				
	10.00R20	149/146	L				
	11.00R20	152/149	L				

PATTERN	SIZE	LOAD INDEX	SPEED RATING				
CONQUEROR AF91 _{IP27}	12.00R20	154/151	J				
		156/153	J				
CONQUEROR AF97 _{IP39}	9.00R20	144/142	J				
		149/146	J				
		152/149	J				
		154/151	J				
CONQUEROR AF142 _{IP30}	12.00R24	160/157	J				
GALAXY AF156 _{IP11}	9.00R20	144/142	L				
GALAXY AF177 _{IP10}	11.00R20	152/149	K				
		8R22.5	130/128	M	E	C	71dB
		9R22.5	139/137	M	E	C	71dB
		10R22.5	144/142	M	E	C	71dB
		11R24.5	149/146	L			
		11R22.5	146/143	M	E	C	71dB
		12R22.5	152/149	M	E	C	71dB
		13R22.5	154/151	L	E	C	71dB
		205/75R17.5	124/122	M	E	C	71dB
		215/75R17.5	126/124	M	E	C	71dB
			135/133	J	E	C	71dB
		225/75R17.5	129/127	M	E	C	71dB
			132/130	M	E	C	71dB
		235/75R17.5	143/141	J	E	C	71dB
			136/134	M	E	C	71dB
		245/70R17.5	143/141	J	E	C	71dB
			128/126	M	E	C	71dB
		245/70R19.5	136/134	M	E	C	71dB
			143/141	J	E	C	71dB
		255/70R22.5	140/137	M			
			140/138	M	E	C	71dB
		265/70R19.5	143/141	J	E	C	71dB
			146/144	M	E	C	71dB
		285/70R19.5	150/148	J	E	C	71dB
			148/145	M	E	C	71dB
		275/70R22.5	149/146	M	E	C	71dB
			154/151	M	E	C	71dB
275/80R22.5	154/151	M	E	C	71dB		
	156/150	M	E	C	71dB		
295/80R22.5	154/151	M	E	C	71dB		
	157/154	M	E	C	71dB		
CONQUEROR 186 _{IP31}	315/80R22.5	118/114	K				
		124/120	K				
		128/124	K				
		139/137	K				
		144/142	K				
		149/146	K				
		152/149	K				

PATTERN	SIZE	LOAD INDEX	SPEED RATING			
GALAXY AF186 ^{IP31}	12.00R20	154/151	K			
		156/153	K			
CONQUEROR AF189 ^{IP40}	8.25R16LT	128/124	D			
	10.00R20	149/146	D			
	11.00R20	152/149	D			
	12.00R20	154/151	D			
CONQUEROR AF197 ^{IP20}	385/65R22.5	160	K	C	C	72dB
CONQUEROR AF281 ^{IP31}	10.00R20	149/146	L			
CONQUEROR AF304 ^{IP32}	12.00R20	154/151	L			
CONQUEROR AF310 ^{IP21}	10.00R20	149/146	L			
GALAXY AF327 ^{IP11}	385/65R22.5	160	K	C	C	72dB
		162/160	K/L	C	C	72dB
CONQUEROR AF557 ^{IP21}	10.00R20	149/146	L	E	D	75dB
	11.00R22	154/151	L	E		75dB
	12R22.5	152/149	M	E	D	75dB
	295/60R22.5	150/147	L	E	C	75dB
	295/80R22.5	154/151	M	E	C	75dB
	305/70R22.5	152/148	M	E	C	75dB
	305/75R24.5	154/149	L	E	C	75dB
	315/60R22.5	152/148	M	E	C	75dB
	315/80R22.5	154/151	M	E	C	75dB
		157/154	M	E	C	75dB
	GALAXY AF558 ^{IP12}	11R22.5	146/143	M		
11R24.5		149/146	L			
285/75R24.5		147/144	L			
295/75R22.5		146/143	L			
CONQUEROR AF559 ^{IP27}	11R22.5	146/143	M			
	11R24.5	149/146	L			
	285/75R24.5	147/144	L			
	295/75R22.5	146/143	L			
GALAXY AF667 ^{IP12}	11.00R22	154/151	L	C	C	71dB
	12R22.5	152/149	M	C	C	71dB
	275/80R22.5	149/146	M	C	B	71dB
	295/60R22.5	150/147	L	C	B	71dB
	295/80R22.5	154/151	M	C	B	71dB
	305/70R22.5	152/148	M	C	B	71dB
		154/149	L	C	B	71dB
	315/60R22.5	152/148	M	C	B	76dB
	315/80R22.5	154/151	M	C	B	71dB
157/154		M	C	B	71dB	
CONQUEROR AF169 ^{IP39}	8.25R16LT	128/124	D			
	8.25R20	139/137	D			
	11.00R22	152/149	D			
	12.00R20	154/151	D			

PATTERN	SIZE	LOAD INDEX	SPEED RATING			
CONQUEROR AF701 ^{IP32}	12R22.5	152/149	M			
CONQUEROR AF702 ^{IP33}	11.00R20	152/149	K			
	12.00R20	154/151	K			
CONQUEROR AF705 ^{IP33}	11.00R20	152/149	K			
	12.00R20	154/151	K			
CONQUEROR AF706 ^{IP34}	12R22.5	152/149	L			
CONQUEROR AF707 ^{IP34}	11R22.5	146/143	L			
	11R24.5	149/146	L			
CONQUEROR AF708 ^{IP35}	11R22.5	146/143	L			
	11R24.5	149/146	L			
CONQUEROR AF717 ^{IP13}	11.00R22	154/151	L	E	C	75dB
	11R22.5	146/143	L	E	C	75dB
	12R22.5	152/149	M	E	C	75dB
	13R22.5	154/151	L	E	C	75dB
	205/75R17.5	124/122	M	E	C	75dB
	215/75R17.5	126/124	M	E	C	75dB
	225/75R17.5	129/127	M	E	C	75dB
	235/75R17.5	132/130	M	E	C	75dB
	245/70R17.5	136/134	M	E	C	75dB
	225/70R19.5	128/126	M	E	C	75dB
	245/70R19.5	136/134	M	E	C	75dB
	265/70R19.5	140/138	M	E	C	75dB
	285/70R19.5	146/144	M	E	C	75dB
	275/70R22.5	148/145	L	E	C	75dB
	275/80R22.5	149/146	M	E	C	75dB
	295/80R22.5	154/151	M	E	C	75dB
	315/70R22.5	156/150	M	E	C	75dB
	315/80R22.5	154/151	M	E	C	75dB
		157/154	M	E	C	75dB
	CONQUEROR AF737 ^{IP40}	14.00R20		H		
GALAXY AF867 ^{IP14}	11.00R22	154/151	L	C	C	71dB
	11R22.5	146/143	M	C	C	71dB
	12R22.5	152/149	M	C	C	71dB
	13R22.5	154/151	L	C	C	71dB
	295/80R22.5	154/151	M	C	C	71dB
		157/154	M	C	C	71dB
ENERGY AEL2 ^{IP14}	295/80R22.5	154/151	L	B	C	74dB
		152/148	M	B	C	74dB
	315/70R22.5	156/150	L	B	C	74dB
		154/150	M	B	C	74dB
	315/80R22.5	156/150	L	B	C	74dB
		154/150	M	B	C	74dB
	385/65R22.5	160	K	B	C	74dB
		158	M	B	C	74dB

PATTERN	SIZE	LOAD INDEX	SPEED RATING			
ENERGY ADL2 /P15	315/70R22.5	154/150	L	D	C	74dB
	315/70R22.5	152/148	M	D	C	74dB
	315/80R22.5	156/150	L	D	C	74dB
	315/80R22.5	154/150	M	D	C	74dB
ENERGY ATL3 /P15	11R22.5	146/143	M			
	11R24.5	149/146	L	E	D	76dB
	285/75R24.5	147/144	L			
	295/75R22.5	146/143	L			
ENERGY AER2 /P19	11R22.5	146/143	M			
ENERGY AER3 /P19	315/70R22.5	156/150	L	B	C	74dB
	315/70R22.5	154/150	M	B	C	74dB
	315/80R/22.5	156/150	L	B	C	74dB
	315/80R/22.5	154/150	M	B	C	74dB
CONQUEROR ADR2 /P22	10.00R20	149/146	L			
	11.00R20	152/149	L			
	12R22.5	152/149	M			
ENERGY ADR3 /P22	295/80R22.5	154/151	L	B	C	75dB
	295/80R22.5	152/148	M	B	C	75dB
	315/70R22.5	154/150	L	B	C	75dB
	315/70R22.5	152/148	M	B	C	75dB
	315/80R22.5	156/150	L	B	C	75dB
	315/8022.5	154/150	M	B	C	75dB
	385/55R22.5	160	J	C	C	71dB
ENERGY ATR2 /P23	385/65R22.5	160	K	C	C	71dB
	385/65R22.5	158	L	C	C	71dB
ENERGY ATR3 /P23	385/65R22.5	160	K	C	C	72dB
	385/65R22.5	158	L	C	C	72dB
ENERGY ATR5 /P24	385/55R19.5	156	J	B	C	71dB
	385/55R22.5	160	J	B	C	71dB
ENERGY ATR6 /P24	425/65R22.5	165	K	C	C	71dB
ENERGY AEM /P28	385/65R22.5	160	C	D	D	75dB
	385/65R22.5	158	C	D	D	75dB
ENERGY AEM2 /P28	315/80R22.5	157/154	K	D	C	74dB
ENERGY AEM3 /P24	13R22.5	156/150	K	D	C	74dB
ENERGY ADM2 /P35	315/80R22.5	157/154	K	C	C	74dB
	13R22.5	156/150	K	C	C	74dB
ENERGY ADM3 /P36	10.00R20	149/146	K	B	C	73dB
ENERGY ADM5 /P36	10.00R20	149/146	L			
	10.00R20	149/146	K			
ENERGY AEH2 /P38	13R22.5	156/150	G			

PATTERN SIZE	AF11	AF16	AF17	AF18	AF33	AF73	AF81	AF85	AF88	AF91	AF97	AF142	AF156	AF169	AF177	AF186	AF189
	P17	P17	P17	P26	P18	P38	P20	P29	P30	P27	P39	P30	P11	P39	P10	P31	P40
6.50R16LT				•													
7.00R16LT				•												•	•
7.50R16LT				•												•	•
7.50R20		•		•													
8.25R16LT				•						•				•		•	•
8.25R20				•										•		•	
9.00R20		•		•			•				•	•				•	•
10.00R20		•		•		•	•	•			•	•				•	•
11.00R20		•	•	•		•		•			•	•		•	•		•
11.00R22																	
12.00R20		•		•		•		•			•	•		•		•	•
12.00R24	•			•							•						
8R22.5																•	
9R22.5																•	
10R22.5																•	
11R22.5		•		•												•	
11R24.5																•	
12R22.5				•					•							•	
13R22.5				•					•							•	
205/75R17.5																•	
215/75R17.5																•	
225/70R19.5																•	
225/75R17.5																•	
235/75R17.5																•	
245/70R17.5																•	
245/70R19.5																•	
255/70R22.5																•	
265/70R19.5																•	
275/70R22.5																•	
275/80R22.5																•	
285/70R19.5																•	
285/75R24.5																	
295/60R22.5																	
295/75R22.5																	
295/80R22.5									•							•	
305/70R22.5																	
305/75R24.5																	
315/60R22.5																	
315/70R22.5																•	
315/80R22.5		•		•					•							•	
385/55R19.5																	
385/55R22.5																	
385/65R22.5							•										
425/65R22.5							•										
14.00R20																	



PATTERN SIZE	AF197	AF281	AF304	AF310	AF327	AF557	AF558	AF559	AF667	AF701	AF702	AF705	AF706	AF707	AF708	AF717	AF737	AF867
	P20	P31	P32	P21	P11	P21	P12	P27	P12	P32	P33	P33	P34	P34	P35	P13	P40	P14
6.50R16LT																		
7.00R16LT																		
7.50R16LT																		
7.50R20																		
8.25R16LT																		
8.25R20																		
9.00R20																		
10.00R20		•		•		•												
11.00R20											•	•						
11.00R22						•			•						•			•
12.00R20			•								•	•						
12.00R24																		
8R22.5																		
9R22.5																		
10R22.5																		
11R22.5							•	•				•	•	•				•
11R24.5							•	•					•	•				
12R22.5						•			•	•			•			•		•
13R22.5																•		•
205/75R17.5																•		
215/75R17.5																•		
225/70R19.5																•		
225/75R17.5																•		
235/75R17.5																•		
245/70R17.5																•		
245/70R19.5																•		
255/70R22.5																•		
265/70R19.5																•		
275/70R22.5																•		
275/80R22.5									•							•		
285/70R19.5																•		
285/75R24.5							•	•										
295/60R22.5						•			•									
295/75R22.5							•	•										
295/80R22.5						•			•						•			•
305/70R22.5						•			•									
305/75R24.5						•			•									
315/60R22.5						•			•									
315/70R22.5																•		
315/80R22.5						•			•						•			•
385/55R19.5																		
385/55R22.5																		
385/65R22.5	•				•													
425/65R22.5																		
14.00R20																•		



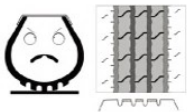
PATTERN SIZE	AEL2	ADL2	AEL2	ATL3	AER2	AER3	AEM	AEM2	AEM3	ADR2	ADR3	ADM2	ADM3	ADM5	ATR2	ATR3	ATR5	ATR6
	P38	P15	P14	P15	P19	P19	P28	P28	P29	P22	P22	P35	P36	P36	P23	P23	P24	P24
6.50R16LT																		
7.00R16LT																		
7.50R16LT																		
7.50R20																		
8.25R16LT																		
8.25R20																		
9.00R20																		
10.00R20										•			•	•				
11.00R20										•								
11.00R22																		
12.00R20																		
12.00R24																		
8R22.5																		
9R22.5																		
10R22.5																		
11R22.5							•	•										
11R24.5							•	•										
12R22.5										•								
13R22.5	•								•			•						
205/75R17.5																		
215/75R17.5																		
225/70R19.5																		
225/75R17.5																		
235/75R17.5																		
245/70R17.5																		
245/70R19.5																		
255/70R22.5																		
265/70R19.5																		
275/70R22.5																		
275/80R22.5																		
285/70R19.5																		
285/75R24.5										•								
295/60R22.5																		
295/75R22.5										•								
295/80R22.5																		
305/70R22.5																		
305/75R24.5																		
315/60R22.5																		
315/70R22.5																		
315/80R22.5																		
385/55R19.5																		
385/55R22.5																		
385/65R22.5																•		•
425/65R22.5																•		•
14.00R20																		•

RECOMMENDATIONS FOR THE SAFE USE OF AUFINE REDIAL TRUCK TYRES

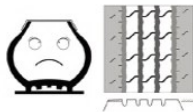
Important instructions for safe inflation

Tyre pressure directly influences tyre life and safety

Over-inflation reduces:	Under-inflation leads to:
<ul style="list-style-type: none"> • Comfort • Grip • Braking distance • Tyre life span, particularly on drive axle tyres. • Safety 	<ul style="list-style-type: none"> • Reduced vehicle handling and safety • A reduction in casing retreadability • An increase of rolling resistance consequently.



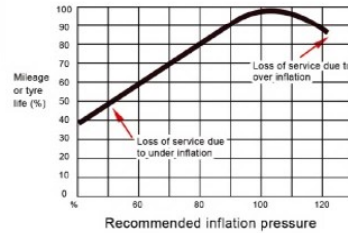
Over-inflation



Under-inflation



Effect of inflation pressure on tyre life



ADVICE BEFORE INFLATION

- 1 Weigh your vehicle and its load, axle by axle, to determine tyre pressure.
- 2 Measure the pressure when cold (when the vehicle has been stationary for several hours): pressures must be checked at regular intervals and during each service.
- 3 Important safety instruction: pressure increases when the vehicle is in motion, never reduce the pressure of a hot tyre.

METHOD OF INFLATION

With inflation cage

- Place the tyre vertically in the inflation cage
- Read the cage user manual.

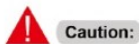
Without inflation cage

Step 1

Step 2

Check the tyre. If in doubt, stop and call an expert.

During inflating stand in line with the tyre tread three meters away.



Caution:

Driving with insufficient pressure can damage your tyres. After having driven with an underinflated tyre, do not re-inflate tyre: have your tyres fully checked over by an expert.



European Tyre Labelling

REGULATION (EC)NO 1222/2009

As of 1 November 2012, New tyre label regulations are in force to help promote safer, more economical and more environmentally friendly road transport in Europe. The new labels indicate tyre performance in three key areas: braking in wet conditions, exterior noise and rolling resistance.

FUEL EFFICIENCY

7 classes - from A (most efficient) to least efficient

The effect varies depending on the vehicle and driving conditions. However, the difference between a G and an A class for a complete set of tyres could reduce fuel consumption for trucks up to 20%.*

* Source: European Commission's impact Assessment SEC (2008) 2860.

WET GRIP

7 classes - from A (best wet grip) to worst wet grip

The effect may vary depending on the vehicle and driving conditions. However, in the case of full braking, the difference between a G and an A class for a complete set of tyres could be up to 30% shorter braking distances.

EXTERIOR NOISE

Exterior noise levels are split into 3 categories and measured in decibel (dB) in comparison with the new European tyre exterior noise levels to be introduced until 2016. The noise pictogram displays the categories while the black arrow next to the pictogram indicates the noise level as an absolute value.

Note that external tyre rolling noise is not related to interior vehicle noise

1 black sound wave (=3dB already less than the future European limit)
 2 black sound waves (= already compliant with the future European limit)
 3 black sound waves (= compliant with the current European limit)

OB LIGATION:

The Regulation requires that tyres produced after 30 June 2012 and on sale in the EU from November 2012 will show grade of Rolling Resistance, Wet Grip and Noise in all technical promotion materials.

* Some tyres are excluded, such as retread, professional off-road or studded tyres.